

ADSL/ULL ZYXEL AMG1302- T11C

Configurazione Router

01.

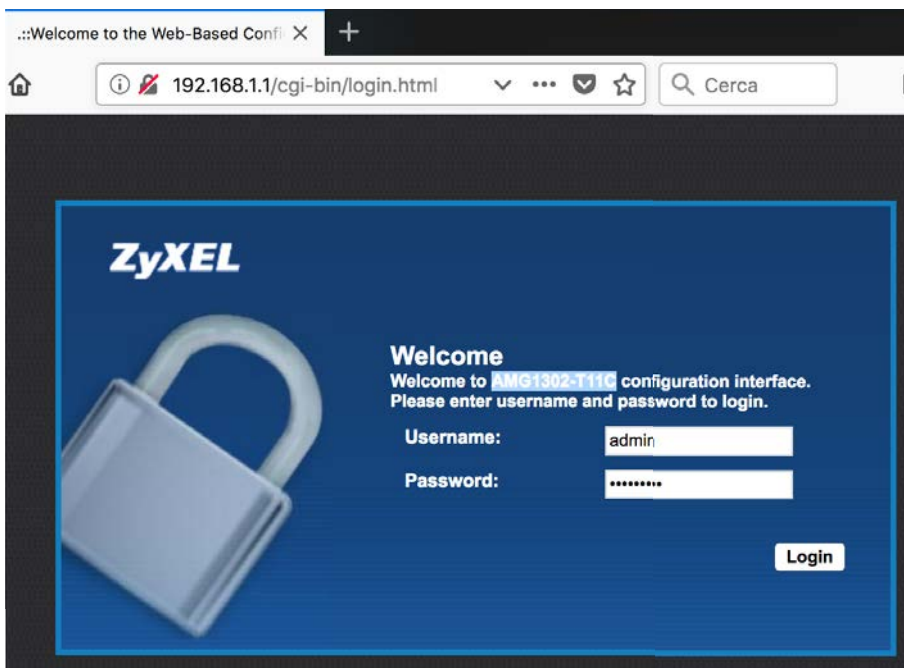
Collegare il router, aprire il browser e digitare l'indirizzo <http://192.168.1.1/>

Inserire username e password di default ovvero:

username: **admin**

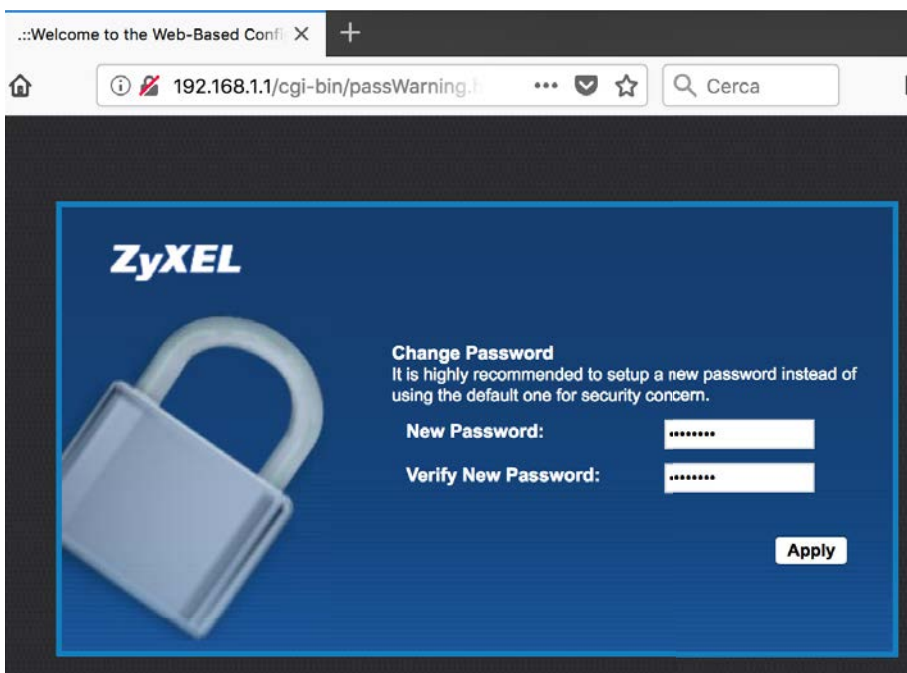
password: **1234**

cliccare su Login



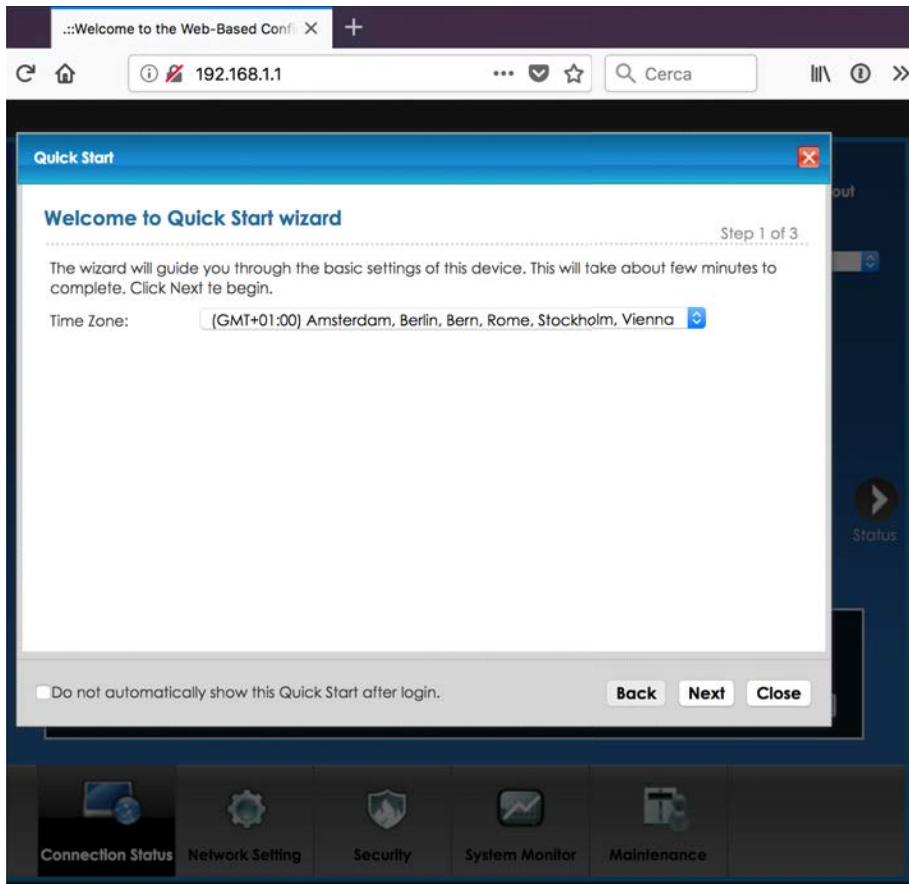
02.

Inserire una nuova password se richiesto, questa sarà conosciuta solo da voi quindi è opportuno salvarla o memorizzarla, se questa venisse dimenticata, per accedere nuovamente al router sarà necessario eseguire il reset alle impostazioni di fabbrica.



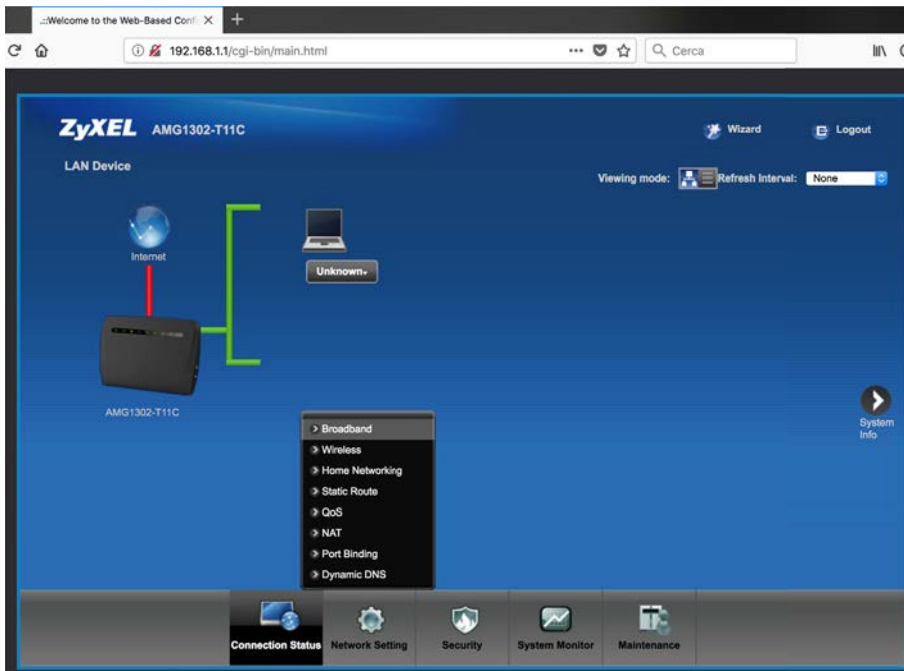
03.

Cliccare su Close per chiudere la procedura wizard di configurazione automatica.



04.

Per procedere alla configurazione della connessione, cliccare su Network Setting – Broadband



05.

Impostare i parametri essenziali:

Line

- Type: Auto Sync-Up
- Annex Type: ANNEX A/I/J/L/M

General

- Mode: Router
- Encapsulation: PPPoE
- User Name: username fornito da ISILine
- Password: password fornita da ISILine
- Service name: <vuoto>
- Multiplex: LLC
- IPv4/IPv6 Dual Stack: IPv4
- PPP Authentication: Auto
- Virtual Circuit ID
 - VPI: 8
 - VCI: 35

IP Address

- Obtain an IP Address Automatically

Routing Feature

- Apply as Default Gateway

DNS Server

- Primary DNS Server: 213.144.64.1
- Secondary DNS Server: 213.144.66.1

Connection

- Kepp Alive

Cliccare su Apply

A questo punto il router è correttamente configurato e può essere connesso alla linea ADSL/ULL fornita da ISILine.

ZyXEL AMG1302-T11C
Broadband

Internet Connection | More Connections

You can configure the Internet settings of this device. Correct configurations build successful Internet connection.

Line
Type: Auto Sync-Up
Annex Type: ANNEX A/I/J/L/M

General
Mode: Router
Encapsulation: PPPoE
User Name: username_fornito
Password: [redacted]
Service Name: [redacted]
Multiplex: LLC
IPv4/IPv6 Dual Stack: IPv4
PPP Authentication: Auto
Virtual Circuit ID
VPI: 8 (Range: 0-255)
VCI: 33 (Range: 32-65535)

IP Address
 Obtain an IP Address Automatically
 Static IP Address
IP Address: 0.0.0.0

IPv6 Tunnel Mode: Disable

Routing Feature
 Apply as Default Gateway

DNS Server
Primary DNS: Obtained From ISP 0.0.0.0
Secondary DNS: Obtained From ISP 0.0.0.0

Bridge and Routing mode in the same WAN
 Enable Con-current WAN

Connection
 Keep Alive
 Connect on Demand
Max Idle Time: 0 Sec

Apply Cancel