



# FTTC/VDSL ZYXEL VMG1312- B10D

Configurazione Router

# 01.

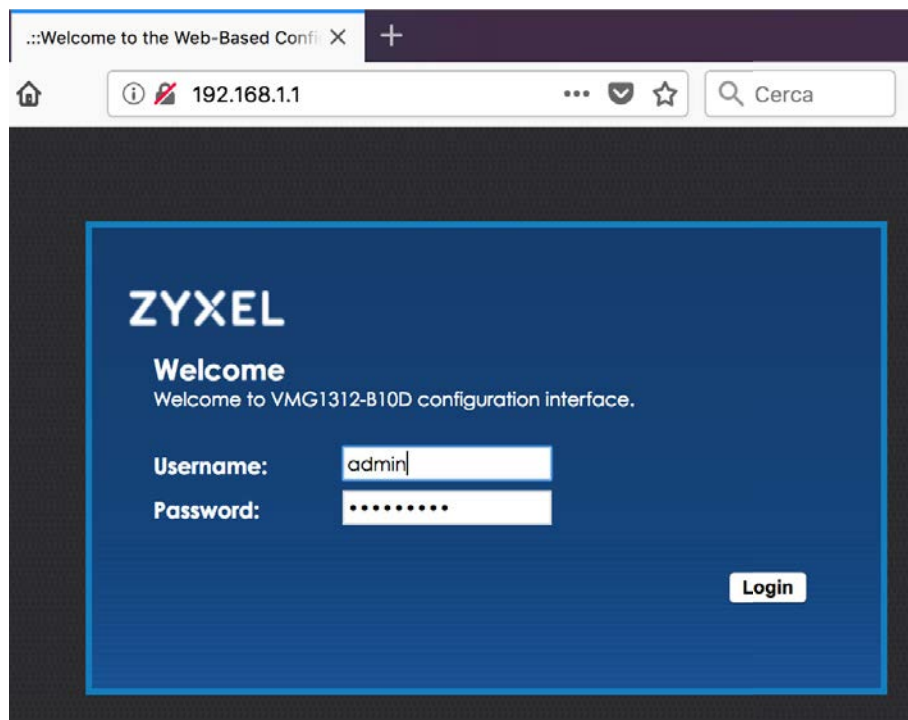
Collegare il router, aprire il browser e digitare l'indirizzo <http://192.168.1.1/>

Inserire username e password di default ovvero:

username: **admin**

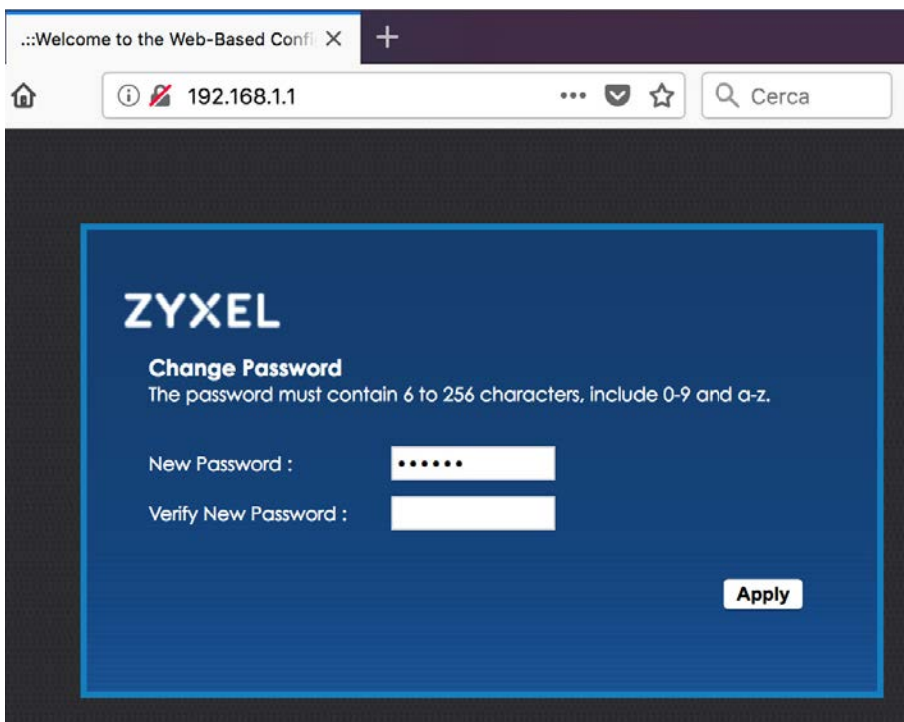
password: **1234**

cliccare su Login



### 02.

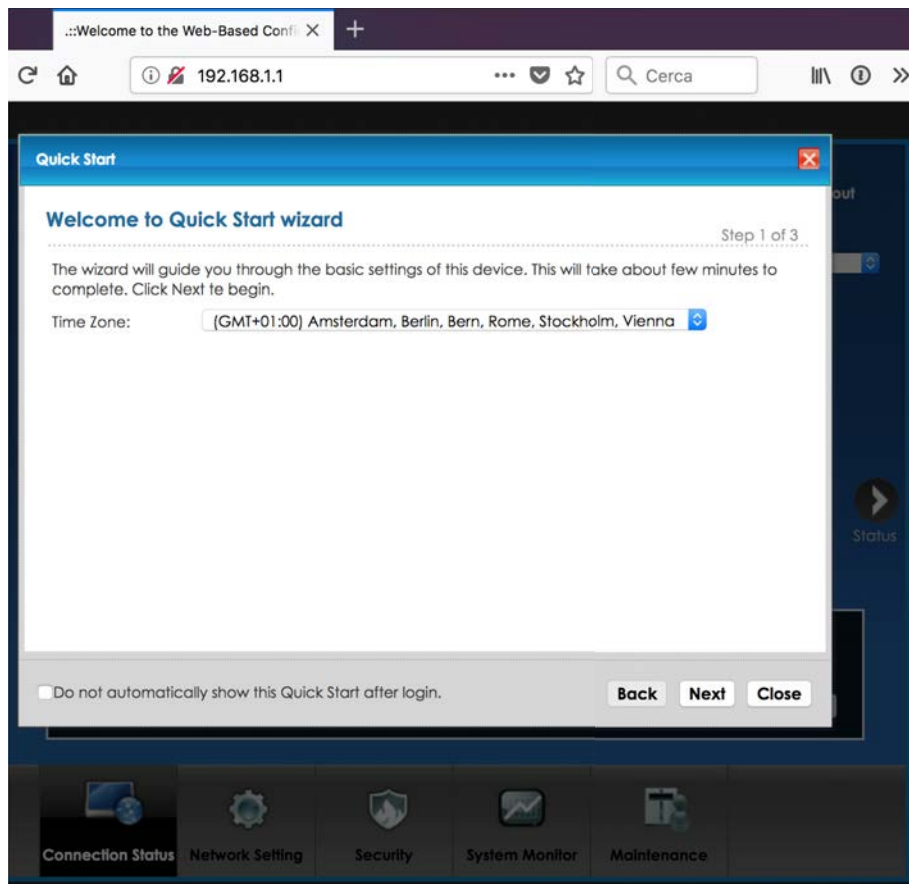
Inserire una nuova password se richiesto, questa sarà conosciuta solo da voi quindi è opportuno salvarla o memorizzarla, se questa venisse dimenticata, per accedere nuovamente al router sarà necessario eseguire il reset alle impostazioni di fabbrica.



The screenshot shows a web browser window with the address bar displaying "192.168.1.1". The page content is a dark blue panel with the "ZYXEL" logo at the top. Below the logo, the heading "Change Password" is followed by the instruction: "The password must contain 6 to 256 characters, include 0-9 and a-z." There are two input fields: "New Password :" with a masked password of six dots, and "Verify New Password :". An "Apply" button is located at the bottom right of the panel.

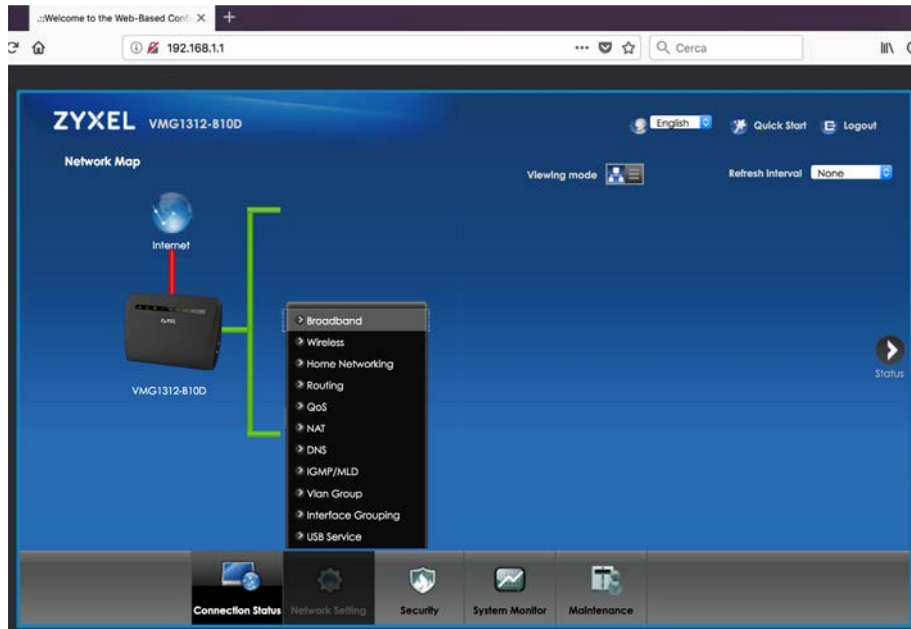
### 03.

Cliccare su Close per chiudere la procedura wizard di configurazione automatica.





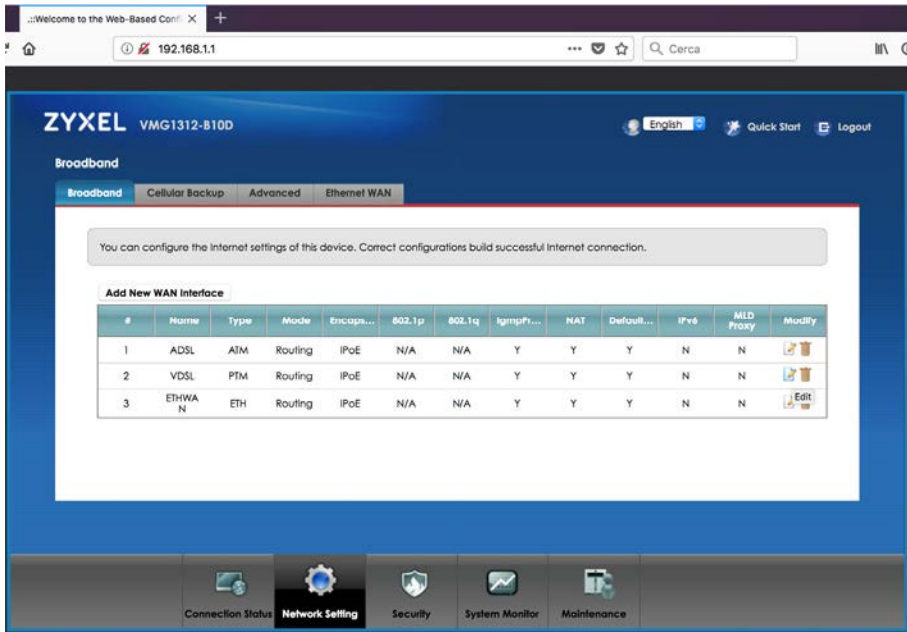
### 04.

Per procedere alla configurazione della connessione, cliccare su Network Setting – Broadband



## 05.

I profili ADSL e ETHWAN, se presenti possono essere eliminati  Cliccare su  per modificare il profilo VDSL



## 06.

Impostare i parametri essenziali:

### General

- Name: VDSL
- Type: ADSL/VDSL over PTM
- Mode: Routing
- Encapsulation: PPPoE
- IPv4/IPv6 Mode: IPv4 Only

### PPP Information

- PPP User Name: username fornito da ISILine
- PPP Password: password fornita da ISILine
- PPP Connection Trigger: Auto Connect

### IP Address

- Obtain an IP Address Automatically

### VLAN

- Disable

### MTU

- MTU: 1492

### Routing Feature

- Nat Enable: Enable
- Fullcone NAT Enable: Disable
- IGMP Proxy Enable: Disable
- Apply as Default Gateway: Enable

### DNS Server

- Use Following Static DNS Address
- Primary DNS Server: 213.144.64.1
- Secondary DNS Server: 213.144.66.1

Cliccare su OK

A questo punto il router è correttamente configurato e può essere connesso alla linea FTTC/VDSL fornita da ISILine.

WAN Interface Edit

**General**

Name: VDSL  
Type: ADSL/VDSL over PTM  
Mode:  Routing  Bridge  
Encapsulation: PPPoE  
IPv4/IPv6 Mode: IPv4 Only

**PPP Information**

PPP User Name: username\_fornita  
PPP Password: password\_fornita  
password unmask:   
PPP Connection Trigger:  Auto Connect  On Demand  
PPPoE Passthrough:  Enable  Disable

**IP Address**

Obtain an IP Address Automatically  
 Static IP Address

**VLAN**

Active:  Enable  Disable  
802.1p: 0  
802.1q: [0-4094]

**MTU**

MTU: 1492

**Routing Feature**

NAT Enable:  Enable  Disable  
Fullcone NAT Enable:  Enable  Disable  
IGMP Proxy Enable:  Enable  Disable  
Apply as Default Gateway:  Enable  Disable

**DNS server**

Obtain DNS Info Automatically  
 Use Following Static DNS Address  
Primary DNS Server: 213.144.64.1  
Secondary DNS Server: 213.144.66.1

OK Cancel